

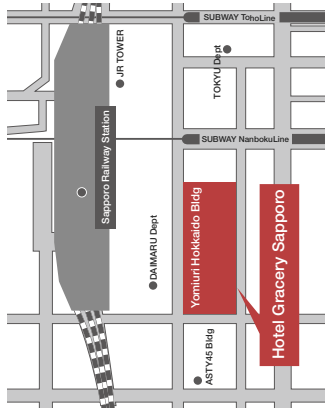


Executive Floor Studio twin (22m²)



SAPPORO

HOTEL GRACERY SAPPORO WASHINGTON HOTEL CHAIN



HOTEL GRACERY SAPPORO WASHINGTON HOTEL CHAIN

- 4-1, Kita-4jyo-nishi, Chuo-Ku, Sapporo, Hokkaido 060-0004
- Available 5 routes: JR Hakodate Main Line, Chitose Line, Gakutoishi Line, Municipal Namboku Line and Toho Line
- ◆ 1 minute walk from JR Sapporo Station
- ◆ 1 minute walk from Sapporo Municipal Railroad, Sapporo Station
- ◆ Access from Sapporo-Chitose Airport (to Sapporo Station) 38 minutes by JR Airport Bus bound for Sapporo City (paid) 70-90 minutes. Getting off at Sapporo Station
- TEL: 011-251-3211 FAX: 011-241-8238
- URL <http://www.gracery-sapporo.com>

Hotel Gracery Ginza
7-10-1, Ginza, Chuo-Ku, Tokyo
7 minutes walk from Ginza exit,
3 minutes walk from Ginza Station.
TEL: 03-5566-1000 (1 floor)
<http://www.gracery-ginza.com>

Hotel Gracery Tamachi
3-8-1, Shibuya, Minato-Ku, Tokyo
4 minutes walk from Shibuya exit,
7 minutes walk from Aoyama, Mita Station,
7 minutes walk from Aoyama, Mita Station.
TEL: 03-4639-1000 (1 floor)
<http://www.gracery-tamachi.com>



Hotel Gracery's official cte
<http://www.gracery.com>
Hotel Gracery's mobile cte
<http://www.gracery.com/m>

Washington Hotel Chain

- Higashi-Tokyoem Asakusakawa Chitose Aomori Ichikawa First
- Hechondo Gifu Himeji Itoya Itoya Station
- Honjo Koyama Aizuwakamatsu Hotel Fushimi-Sapporo
- Hotel Kashiwa Hotel Kashiwa Hotel Kashiwa
- Tokyo Bay Akiha Bichikawa Yokohama Kashiwa-cho
- Yokohama Sakuragicho Fukuoka Takasaka Kansai Airport
- Osaka City Futatabi Saitama Nagasaki Ohtsuka

Telephone number for reservation in each city

- Sapporo: 011242-8849
- Tokyo: 031343-8849
- Osaka: 061628-8849
- Sanda: 022205-8849
- Nagoya: 052360-8849
- Fukuoka: 092271-8849

Washington Hotel Chain's official cite
<http://www.wh-rsv.com>

HOTEL GRACERY SAPPORO WASHINGTON HOTEL CHAIN

Service

High Quality Service, Dependable Security, Full Amenities



Exclusive Guest Lounge

Perfect for business discussions or friendly conversations. Free Internet, morning edition newspapers, magazines and refreshments are provided.

Lobby Attendant

For the benefit of guests who require additional assistance (elderly, physically handicapped, etc.). The lobby attendant is pleased to assist with check in/out and carrying of luggage to guests' rooms.

Breakfast Room-delivery

In addition to our healthy breakfast buffet, we offer a morning set, perfect for those guests who wish to enjoy breakfast in the comfort of their room or are too busy in the morning to attend the buffet. (available from 7:00am)

Dependable Security

Our hotel is equipped with a state-of-the-art key-card system specific to each individual floor.

Furnishings, Amenities, Facilities, Service

- Slacks press (N/A; ladies floor rooms), humidifier, cellphone charger (compatible with Docomo, AU and Softbank phones)
- Ladies floor rooms equipped w/ ironing set
- Video on demand system (150+ movies available, equipped w/ an information system)
- Overnight laundry service (fee charged)
- Laundry items received before 9:30pm available the following day at 7:00am
- Self-service checkout machine.

Information

16F	Executive Floor
14F	Ladies Floor
13F 7F	Standard Rooms, Lobby (7F)
6F 2F	Tenants, Offices
1F	Hotel Restaurant (Kuragakoi)
B1F	Tenants, Offices



[Standard Twin Room] Area 22m, Bed in width 1,100mmx2

[Characters] Theme color is orange; LCD television corresponding to terrestrial digital broadcasting and Video on-Demand (VOD) as standard equipment; a guest room toning bright color produces a delightful stay with family and couple



[Standard Single Room] Area 15m, Bed in width 1,400mm

[Characters] Theme color is orange; a guest room including business-critical equipments and functions such as LAN, connection and charge plugs for mobile phone; a wide semi-double bed as if a sofa as standard installation



[Single Room for Ladies] Area 15m, Bed in width 1,200mm

[Characters] Theme color is blue; partially-introducing wooden floor as you can feel at home without socks; low-type furniture produces an easygoing space; a bed uses a low-rebound characteristic mat or pillow for your comfortable sleep; ready for special amenity; we promise comfort for only ladies room; you need a special card key in order to approach ladies floor; reliable security welcomes you into the room

Guest Room

[Twin Room for Ladies] Area 22m, Bed in width 1,100mmx2

[Characters] Theme color is blue; partially-introducing wooden floor as you can feel at home without socks; an easygoing space is spread by low-type furniture; a bed uses a low-rebound characteristic mat or pillow for your comfortable sleep; ready for special amenity; we promise comfort for only ladies room; you need a special card key in order to approach ladies floor; reliable security welcomes you into the room; the room produces a perfect space for personal contact with your mother and other women

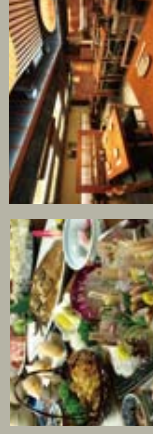
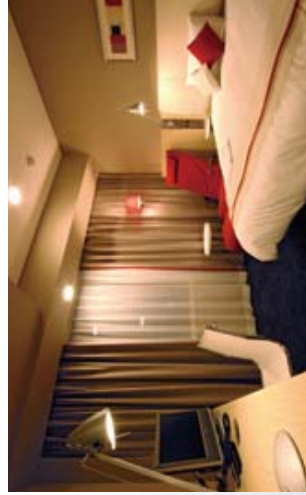
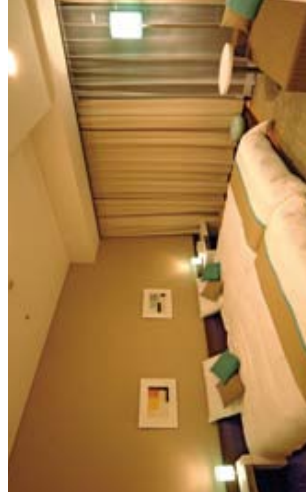
[Double Room for Executives] Area 19m, Bed in width 1,600mm

[Characters] Theme color is red; a 1600mm-sized double bed enables your comfortable sleep; ready for equipments to support for business, as other guest rooms in executive floor, and a massaging chair to allay your fatigue

Japanese Restaurant

“Curb of Kuragakoi” (1st floor)

Breakfast is ready for all-you-can-eat buffet, attaching weight to quality, in Japanese and Western style. In dinner, you can be treated to creative dishes mainly-used seafood, locally-grown natural food. Let's taste fishes and alcohol directly-shipped from Hokuriku.



Locally-grown natural fishes Curb of Kuragakoi
(Opening hour) (Morning) 6:30 AM-10:00 AM
(Noon) 11:45 AM-2:00 PM (closed on Saturdays,
Sundays and national holidays)
(Evening) 5:00 PM-23:00 PM (6:00 PM-21:00 PM in
only national holidays, closed on Saturdays,
Sundays and national holidays)